

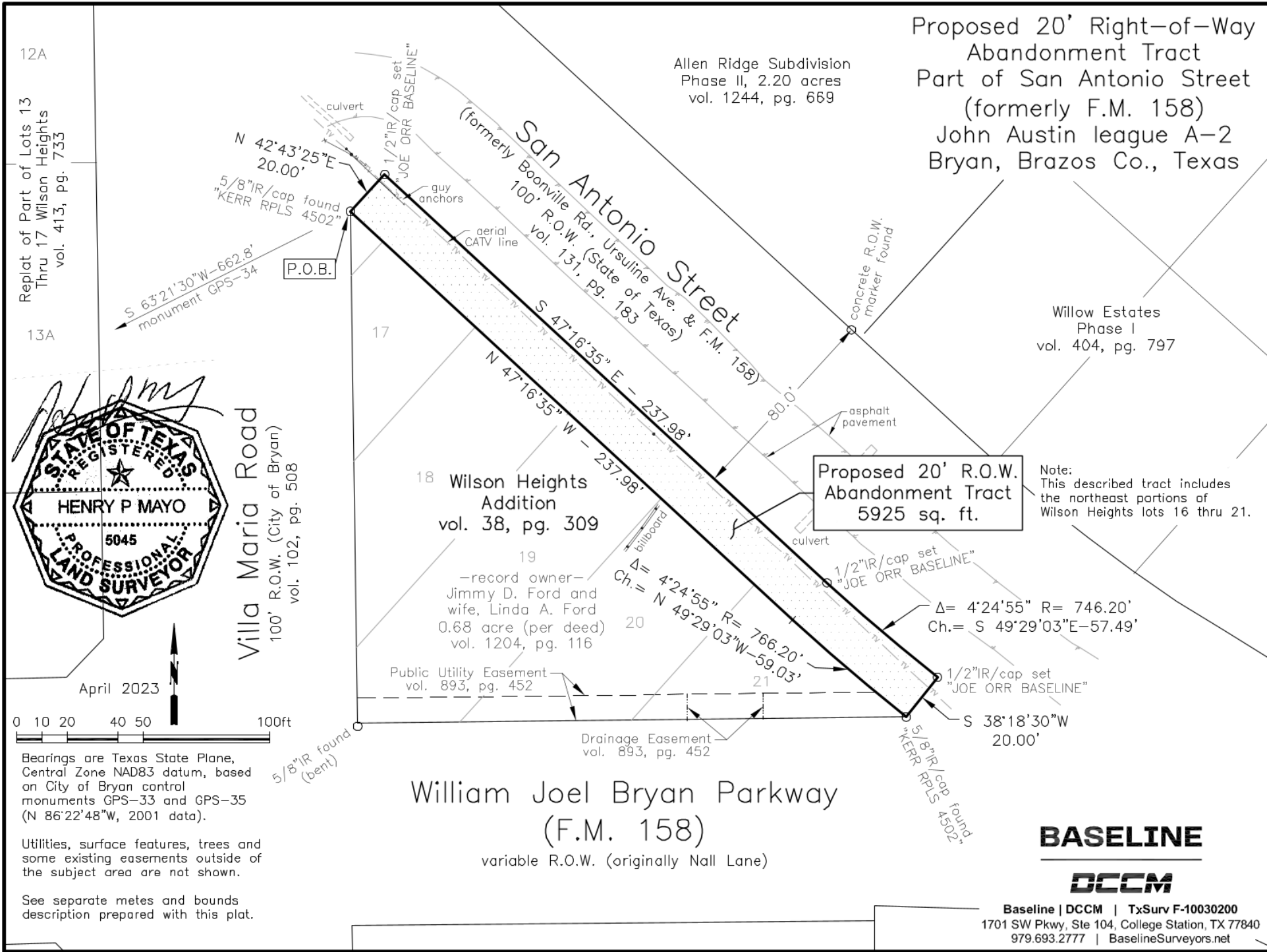
Proposed 20' Right-of-Way
Abandonment Tract
Part of San Antonio Street
(formerly F.M. 158)
John Austin league A-2
Bryan, Brazos Co., Texas

Allen Ridge Subdivision
Phase II, 2.20 acres
vol. 1244, pg. 669

Willow Estates
Phase I
vol. 404, pg. 797

Note:
This described tract includes
the northeast portions of
Wilson Heights lots 16 thru 21.

Proposed 20' R.O.W.
Abandonment Tract
5925 sq. ft.



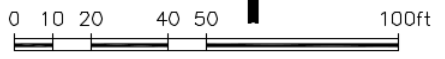
12A
Replat of Part of Lots 13
Thru 17 Wilson Heights
vol. 413, pg. 733

13A



Villa Maria Road
100' R.O.W. (City of Bryan)
vol. 102, pg. 508

April 2023



Bearings are Texas State Plane,
Central Zone NAD83 datum, based
on City of Bryan control
monuments GPS-33 and GPS-35
(N 86°22'48"W, 2001 data).

Utilities, surface features, trees and
some existing easements outside of
the subject area are not shown.

See separate metes and bounds
description prepared with this plat.

William Joel Bryan Parkway
(F.M. 158)
variable R.O.W. (originally Nall Lane)

BASELINE



Baseline | DCCM | TxSurv F-10030200
1701 SW Pkwy, Ste 104, College Station, TX 77840
979.693.2777 | BaselineSurveyors.net